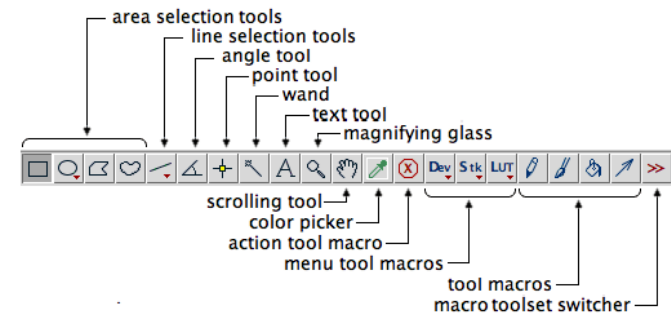
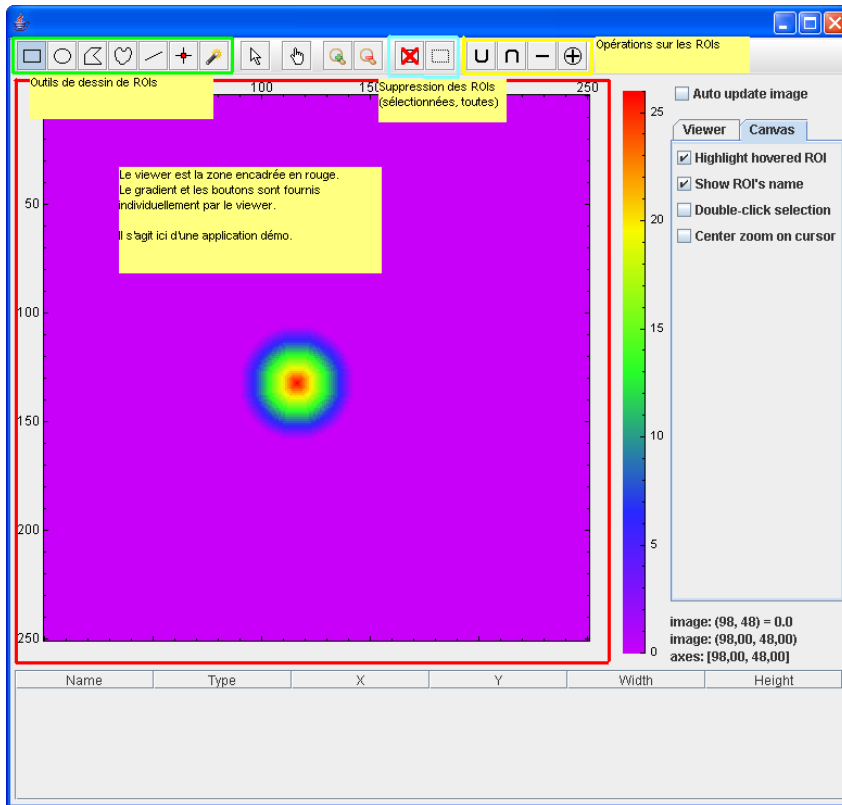
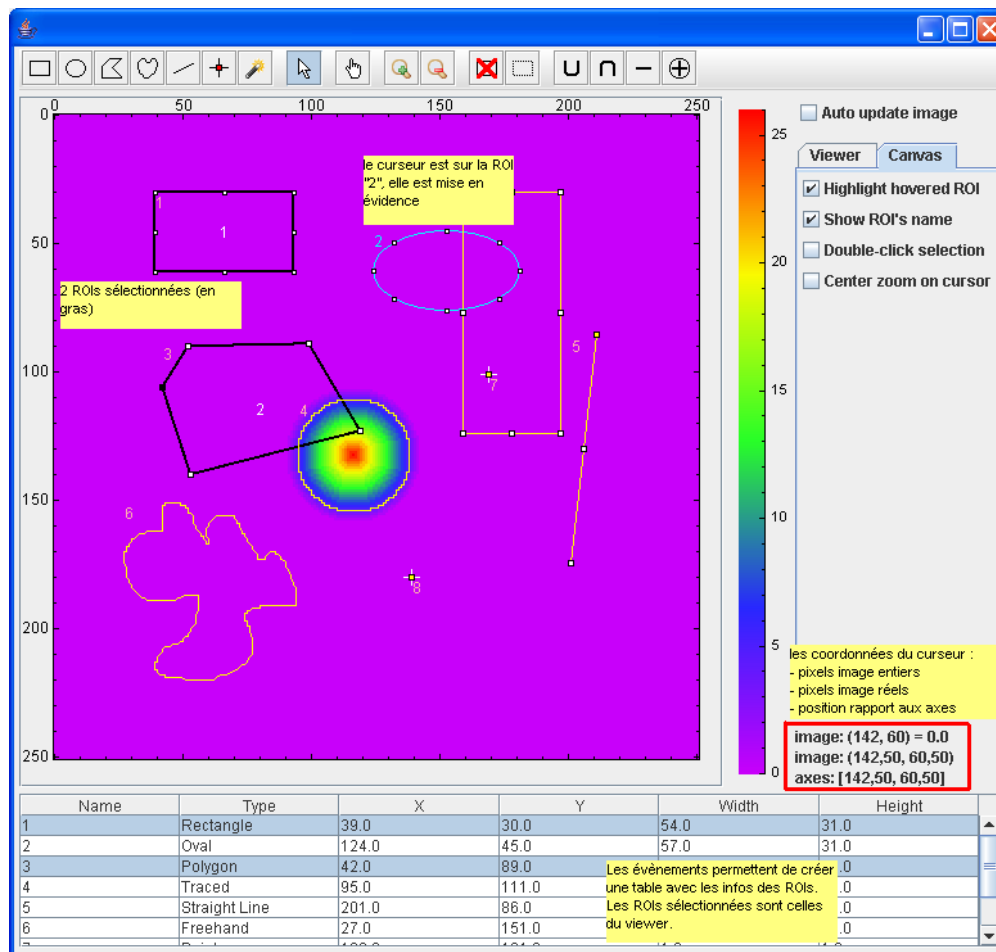


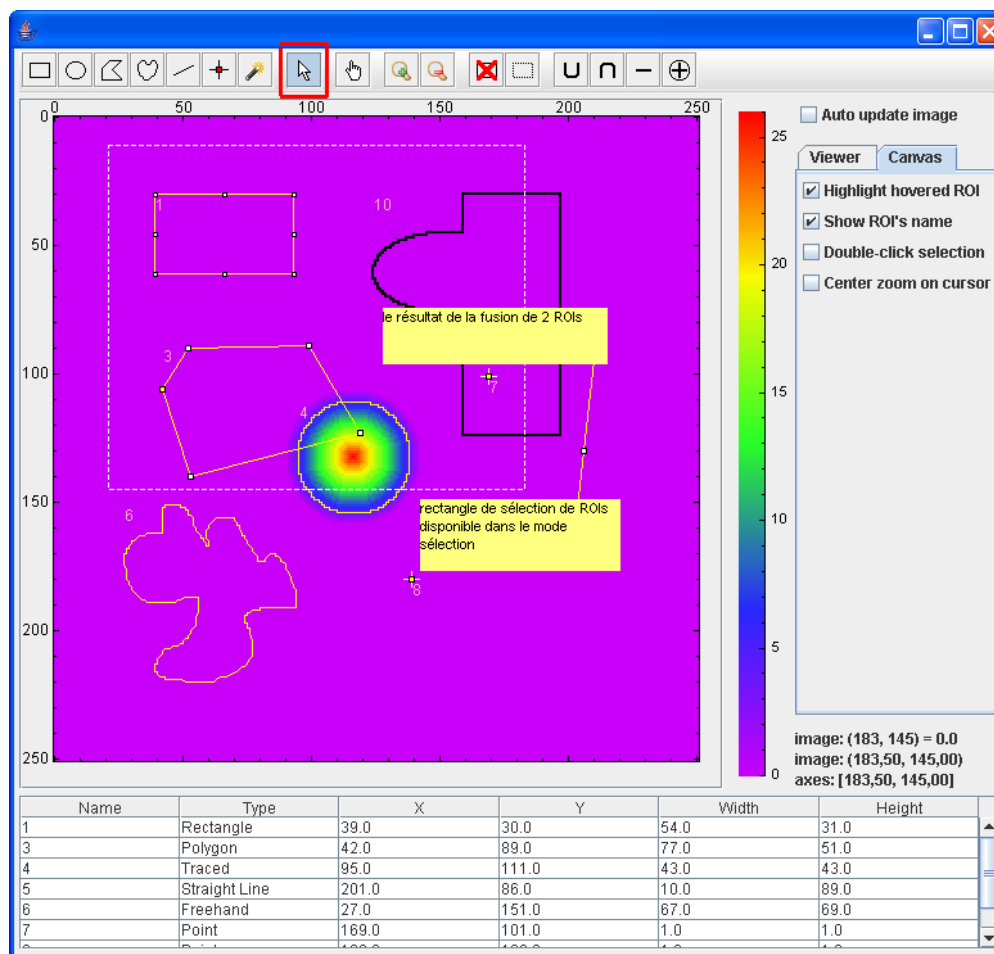
# **A review of SOLEIL contribution on ATK graphical components**

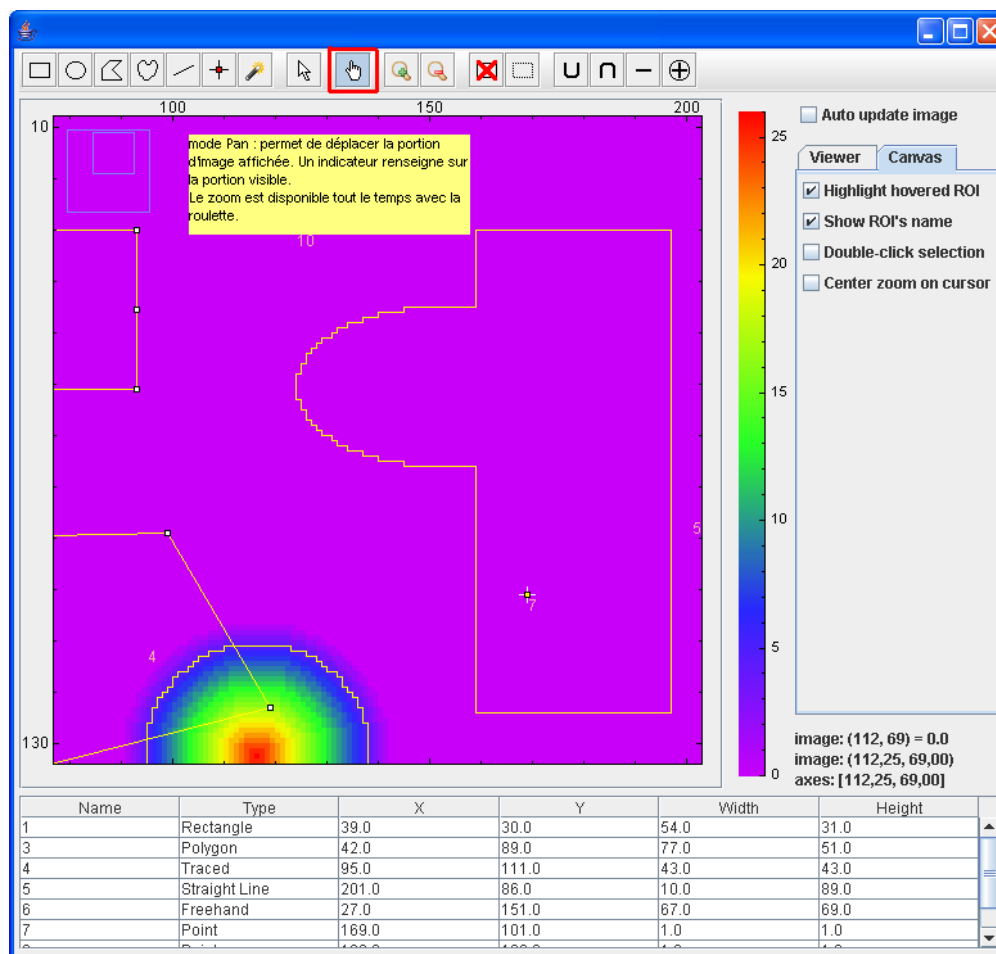
# IJViewer ATK component embeds Image J library

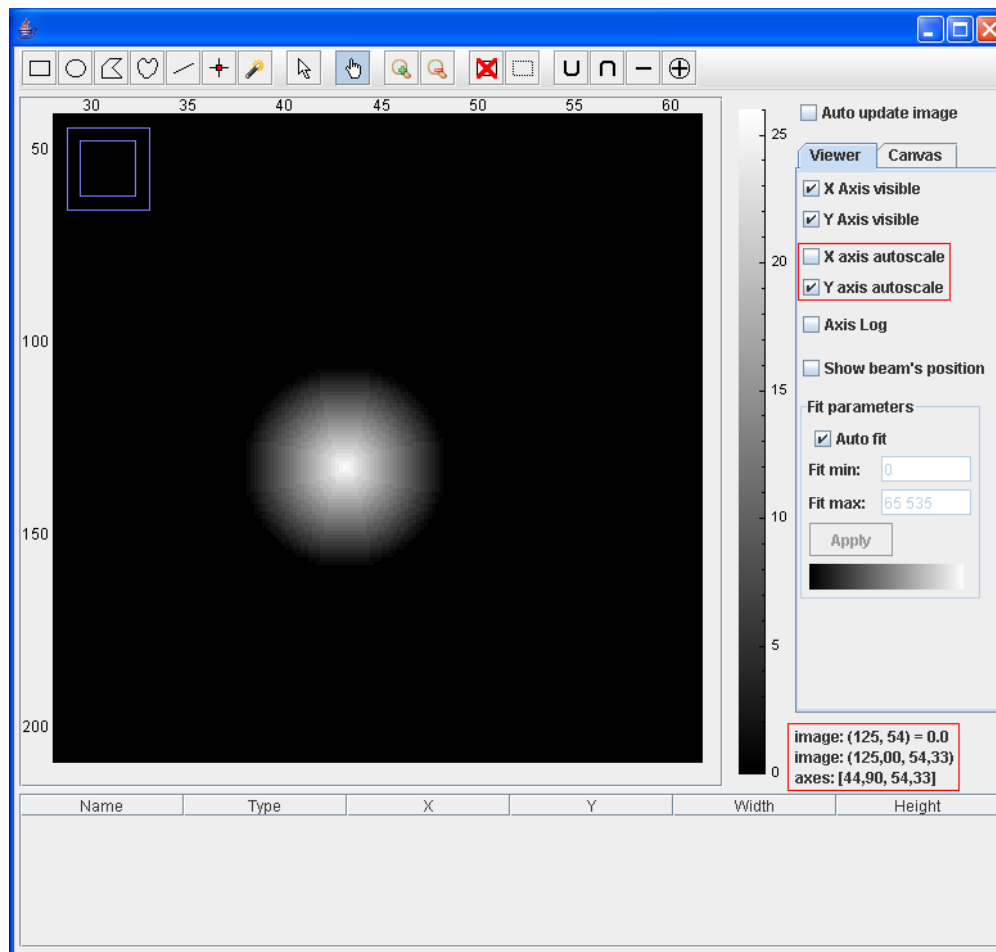
## Image J is an Image Processing and Analysis framework

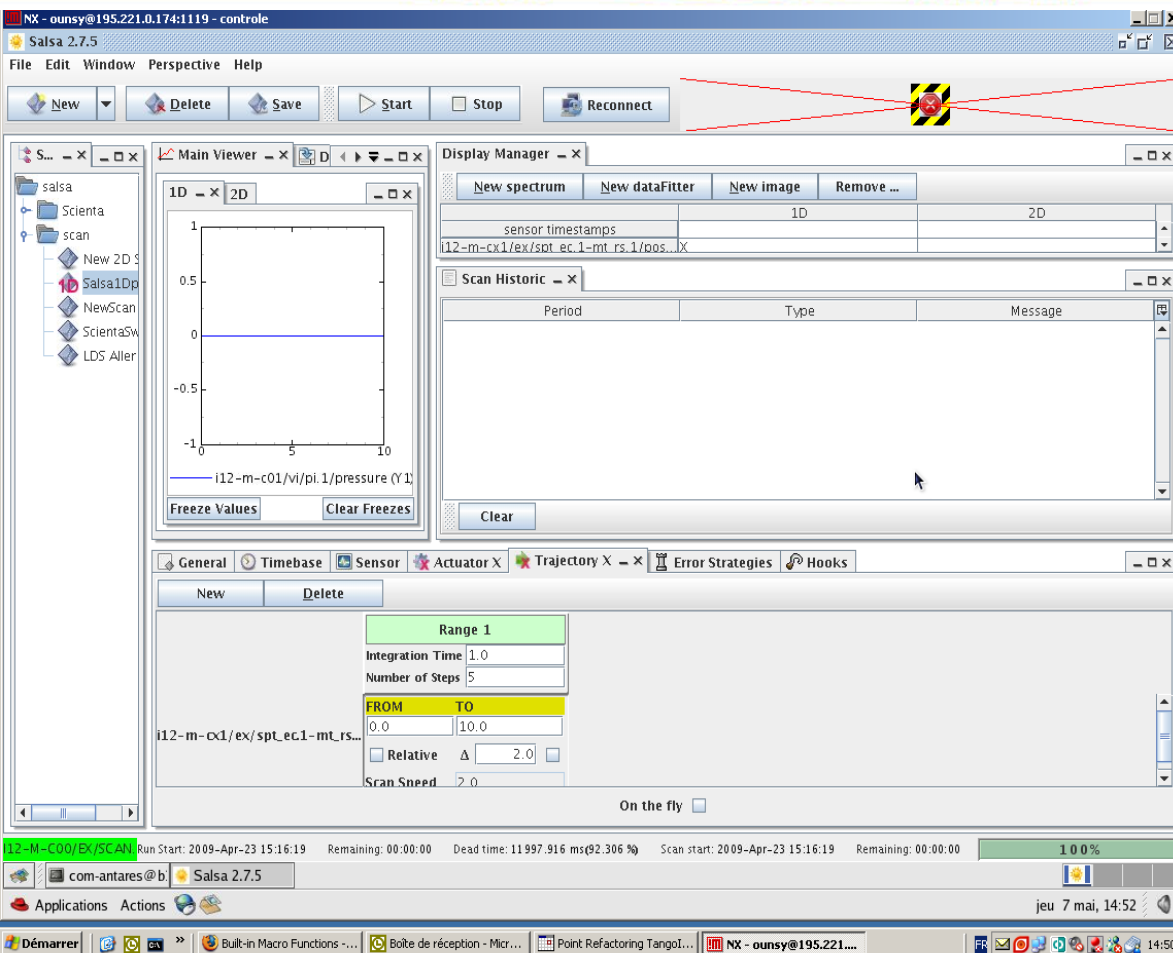








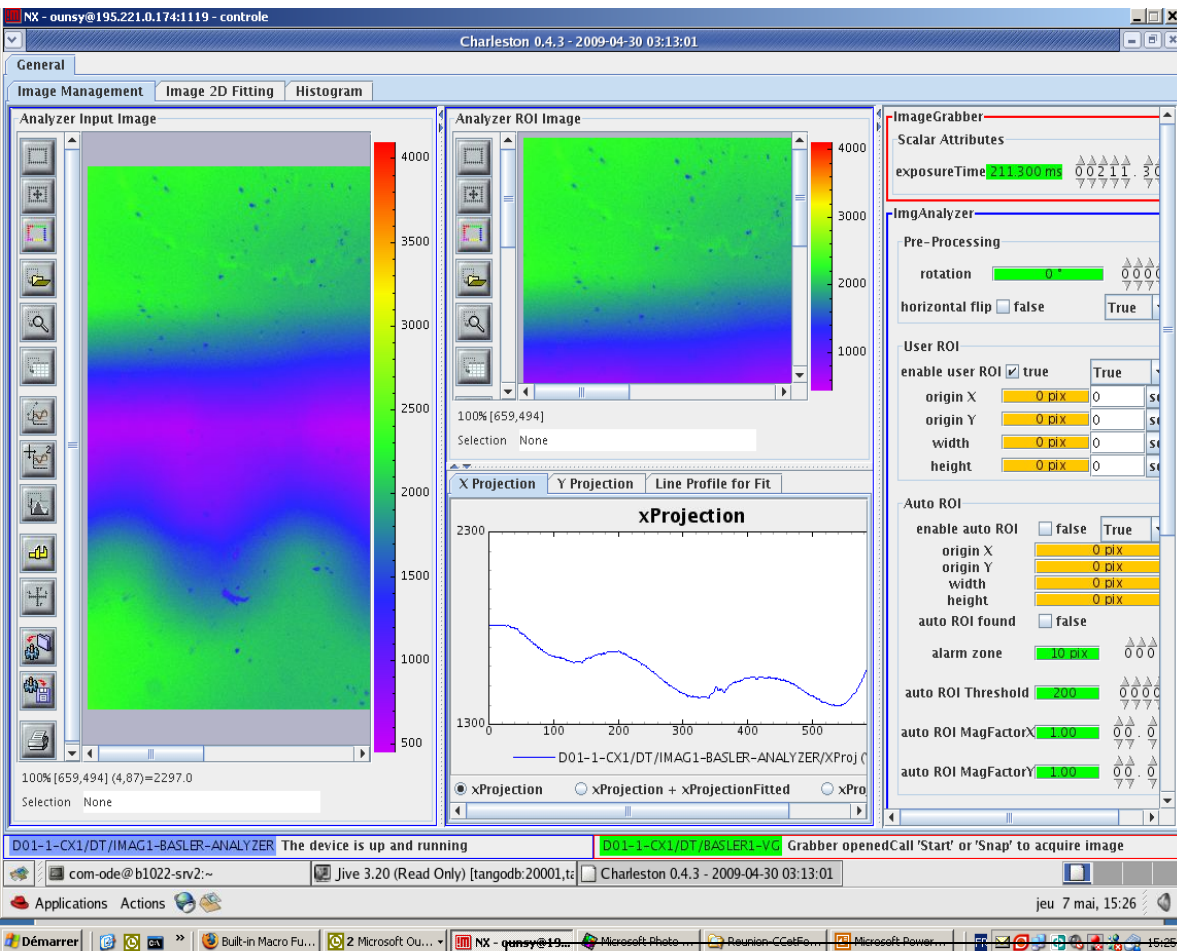




## Configuration ScanServer GUI

- ✓ Scans
  - 1D,2D
  - n actuators \* m sensors
  - Scalar, spectrum and image sensors
- ✓ Types
  - Step by step
  - Energie scan
  - K scan
  - On the fly
  - Continuous
- ✓ Context Validation (BeamlineStatus)
- ✓ Error Strategies
  - ✓ Ignore, pause, continue
- ✓ NeXus Data Format

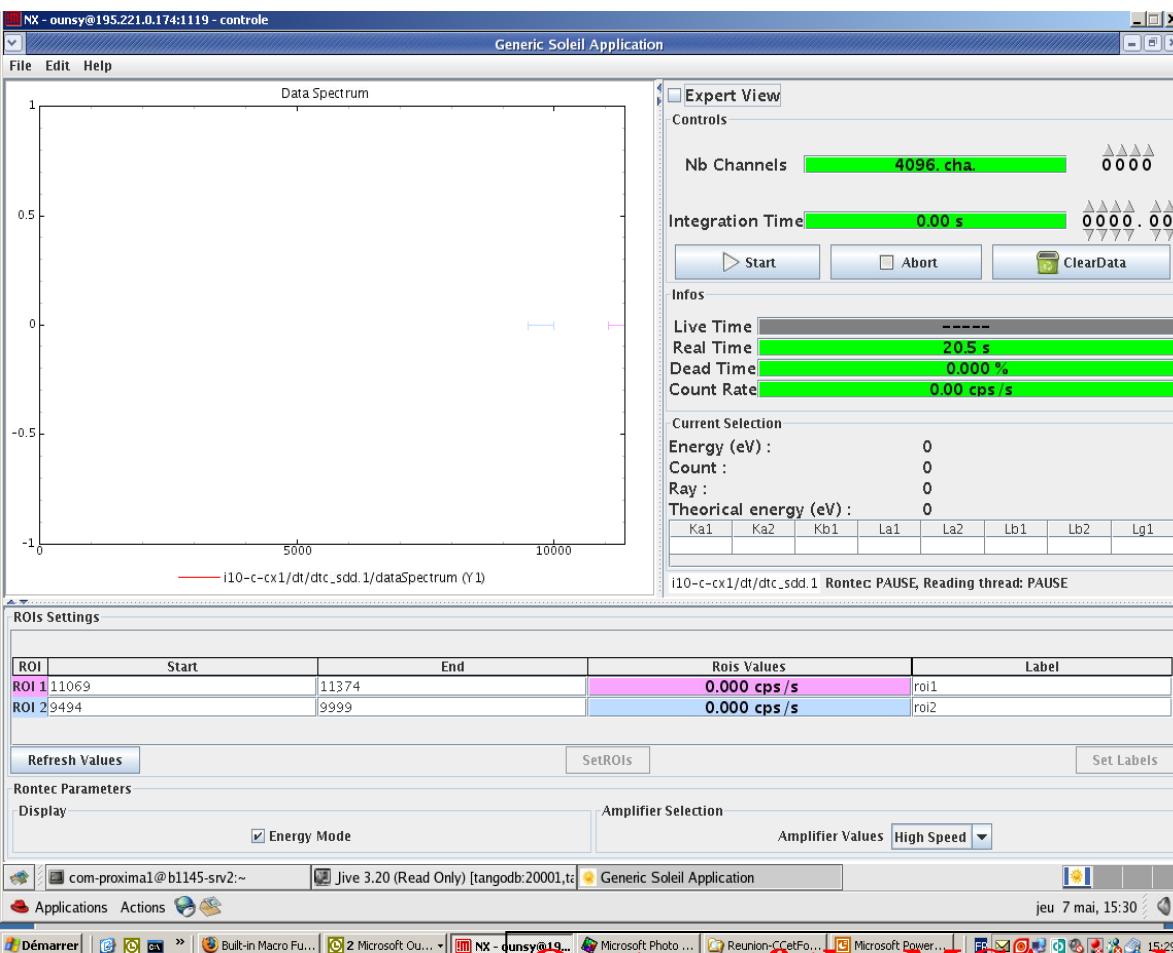
**On top of the ScanServer device**



## Image Analysis GUI (Grabber)

- ✓ Image
  - Standar ATK features
  - ROI definition
  - Hor. And Ver. projections
- ✓ Caméra Config
  - Exposure Time
- ✓ Image Manipulations (Analyzer)
  - Rotation, Flip
  - 2D gaussian fit
  - Moments : max,mean,variance..

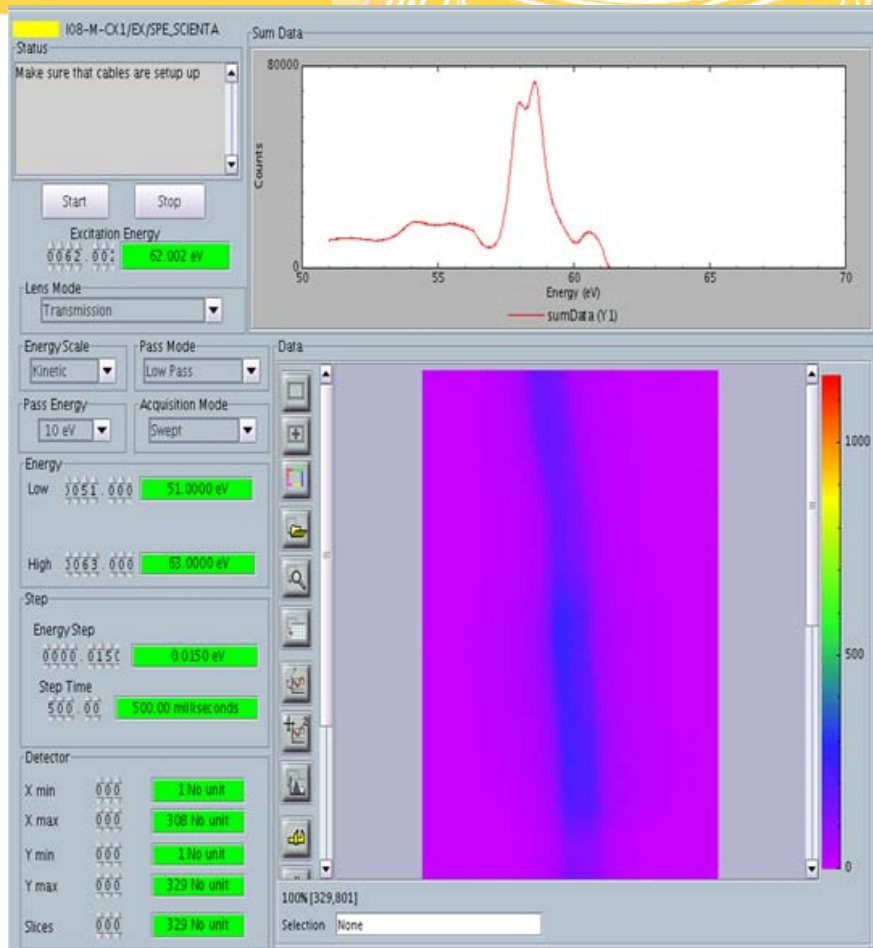
**On top of the ImgAnalyzer device**



## Config and Visu MCA/Rontec

- ✓ Spectrum
  - Standard ATK Features
  - Energy or counter mode
  - ROIs drawing
- ✓ Detector Config
  - Exposure time .....

**On top of the MCA and Rontec device**



## Scienta Acquisition

- ✓ Scan
  - Configuration
  
- ✓ Visualization
  - Acquired Image
  - Energy spectrum
  
- ✓ Forseen
  - Integration in SALSA

**On top of the SCIENTA device**

- ✓ Package all the interesting graphical feature in a graphical component
- ✓ Provide the component in a Java bean
- ✓ Let the bean to be self consistant
- ✓ User preferences are accessible via Java bean properties
- ✓ Integrate the bean as you want in Globalscreen, JDD or in a standalone GUI

**ALL THE STUFF IS ALREADY (OR WILL SOON BE !!)  
ON SOURCEFORGE**